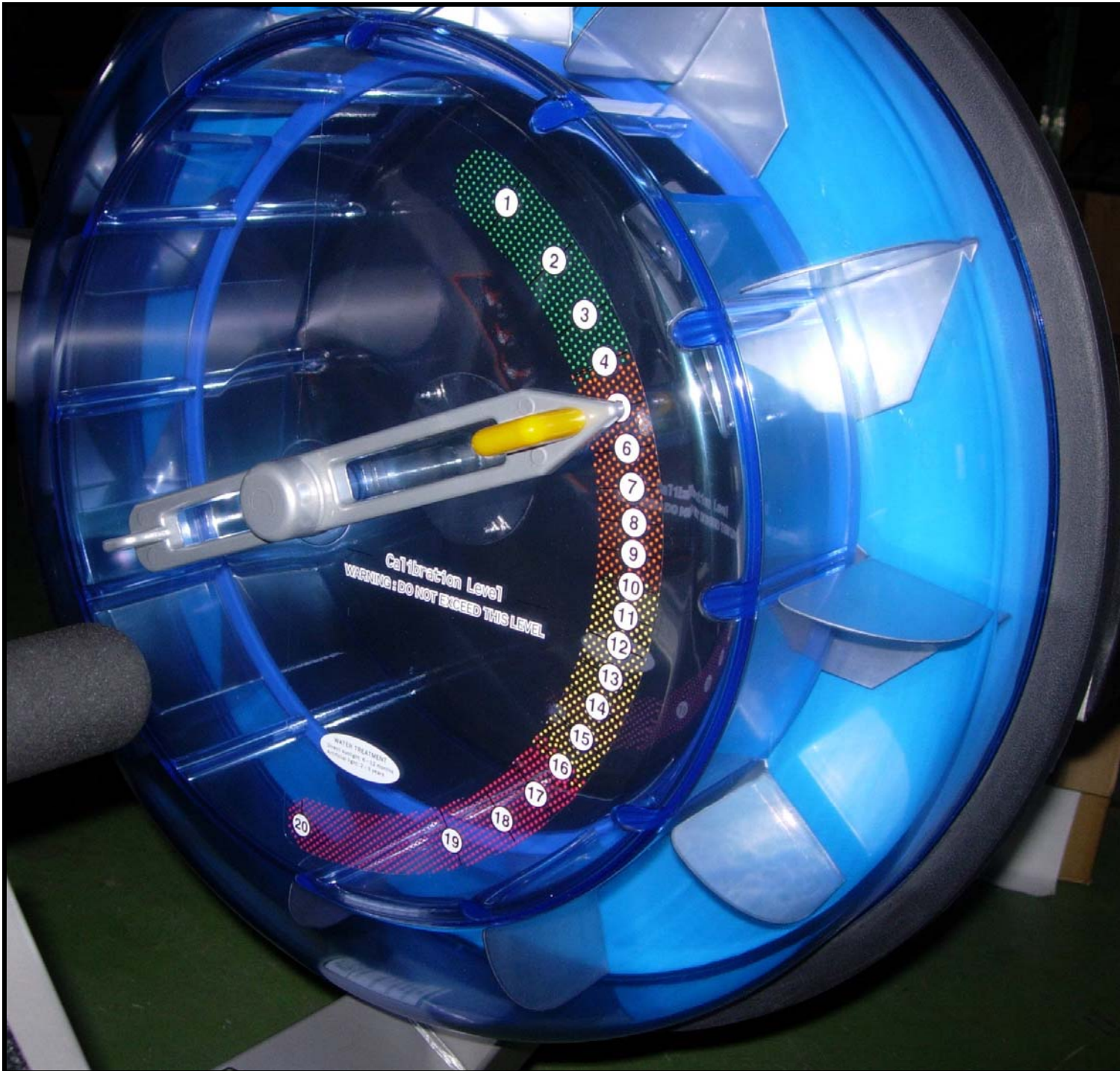


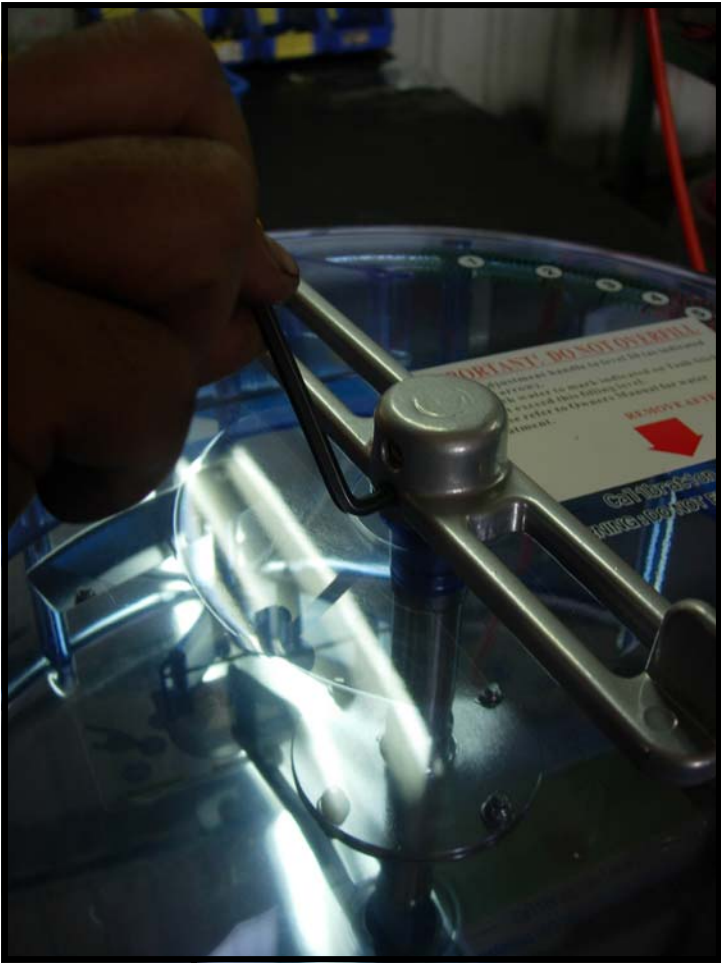
Tank disassembly and service guide E520/E720/E820/E920



Note to Service Technician:
This service guide covers complete tank disassembly with special emphasis on main-shaft/flywheel removal and tank seal replacement.

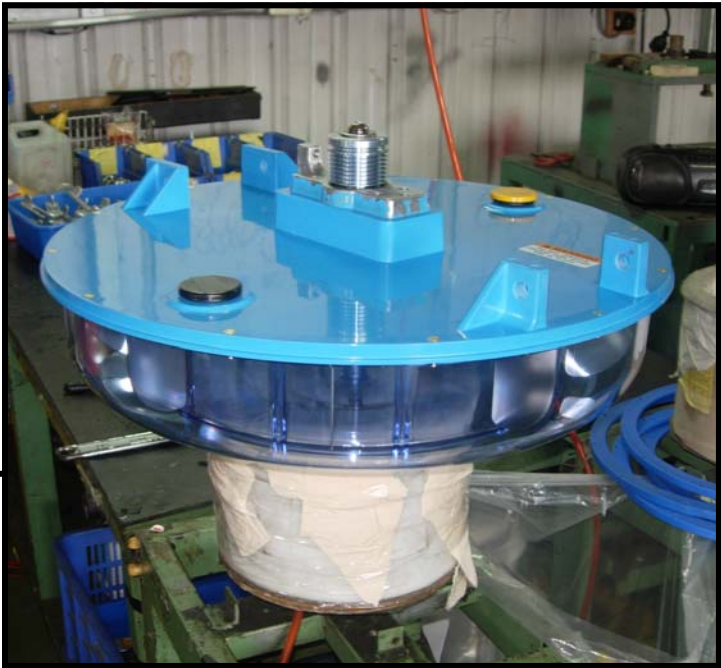
Inquiries regarding PC tank adjuster shaft or adjuster plate service can be found in the appropriate service manual.

Small belt pulley removal prep:

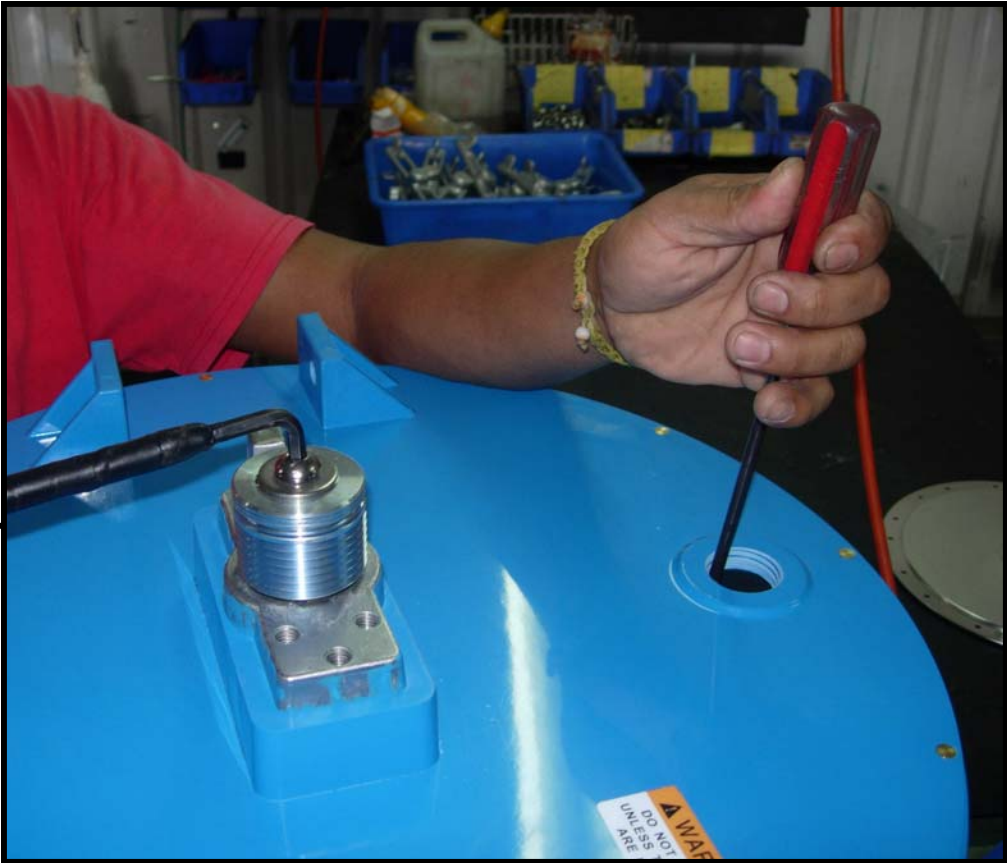


Step 1: Remove the adjuster handle grub screws and remove handle from adjuster shaft.

Step 2: Flip the tank over to access the main-shaft/belt pulley



Step 3: Using a screwdriver or suitable tool, lock the impeller blade in place and remove the rear main-shaft bolt.



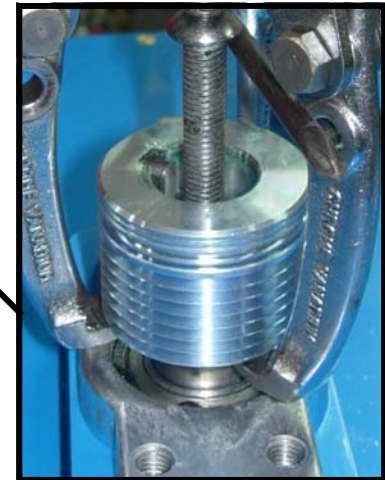
Small Pulley Removal:

Step 4: Remove Main shaft rear bolt and washer.

Step 6: With a standard bearing puller, begin threading the pulley off the main shaft. Once the pulley has some clearance away from the rear of the aluminum housing, reposition the bearing puller to the bottom of the pulley for easier removal as shown below.

Step 5: Screw a M10x (at least 70mm) bolt into the main-shaft.

Main shaft shown after small pulley, keyway, washer and bolt removal.



Tank main shaft seal replacement service guide:



Note to Service Technician: This service guide is applicable to all First Degree Products using the Multi-level resistance tank.; which includes the following products manufactured after March of 2006...(For details regarding older equipment, please consult the service notes regarding the aluminum tank.)

1. S-500
2. UBE
3. Cycle XT
4. S-350/S-250

Evolution series:

1. E-520
2. E-720/820/920
3. E-316/216

The service guide is for main-shaft seal replacement only, and assumes the tank has been removed from the machine and pulleys/sprockets removed. For further details regarding specific product tank removal and service, please consult the appropriate model specific section of the service manual.

The seal replacement kit consists of the following parts:

- 1x #10025 NBR tank shaft seal
- 2x #10012 6005ZZ NSK bearing
- 1x #10145 Bearing Spacer
- 1x #10186 C-clip

Removing the PC tank cover



Step 1



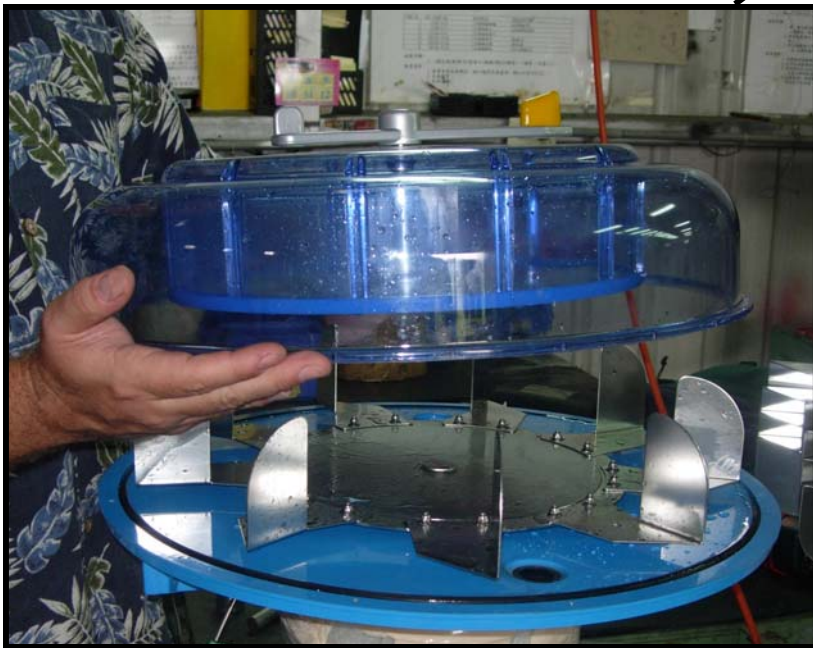
Step 2

Step 3

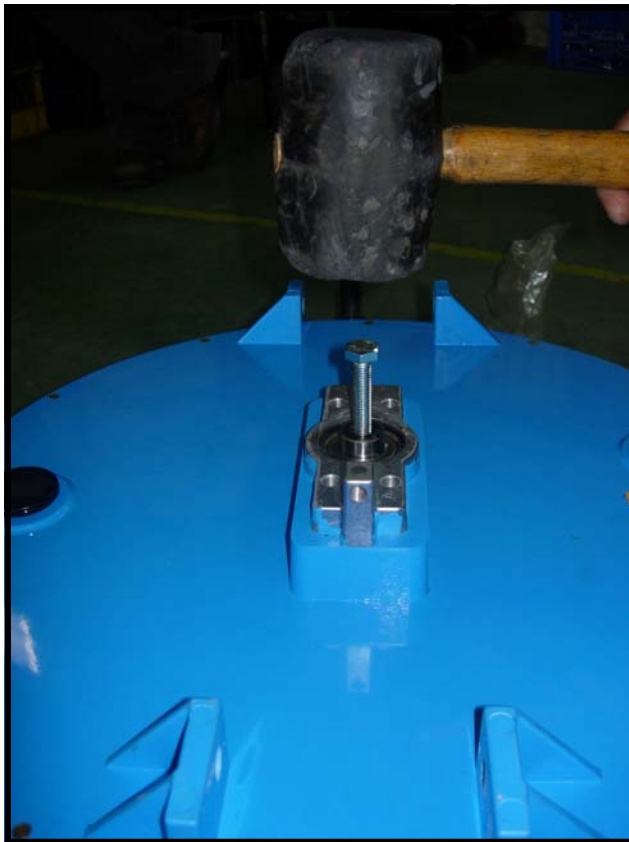
Step 4



Start by removing Polycarbonate shell. Once the M3x12mm tank screws (12x) have been removed, use a rubber mallet and drop cloth and tap gently to break loose the outer tank seal. Remove the upper section of the tank, and inspect the O-ring for any signs of cracking tearing or binding. Replace if needed.



Removing the flywheel/main shaft



Next, flip the tank back over and find a suitable location to drive the flywheel mainshaft through as pictured; such as the ends of two tables, workbenches or even two chairs. Use a rubber mallet to drive the mainshaft through the tank-back. Screw a M10 bolt into the mainshaft rear to help drive the mainshaft out as shown.

Note: The flywheel mainshaft is heavy. Allow the assembly to drop onto a soft surface underneath. The impeller blades are also sharp, use care when handling.

Removing the flywheel/main shaft with the FDF Flywheel shaft puller P/N13300

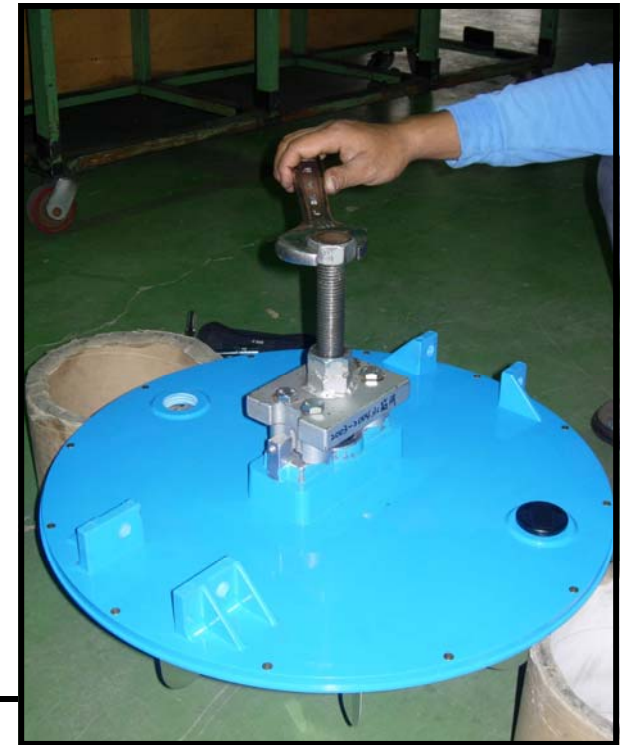


First, attach the FDF flywheel shaft puller to the rear of the SMC tank aluminum housing and tighten the four bolts as shown. Then, with a large open-end or crescent wrench, slowly turn the main puller bolt clock-wise until the flywheel is forced through the housing and out of the tank.

Note: Use a towel or other soft surface underneath to avoid damage when the flywheel/mainshaft assembly drops out of the housing.

Step 1:

Step 3:



Step 4:

Step 2:



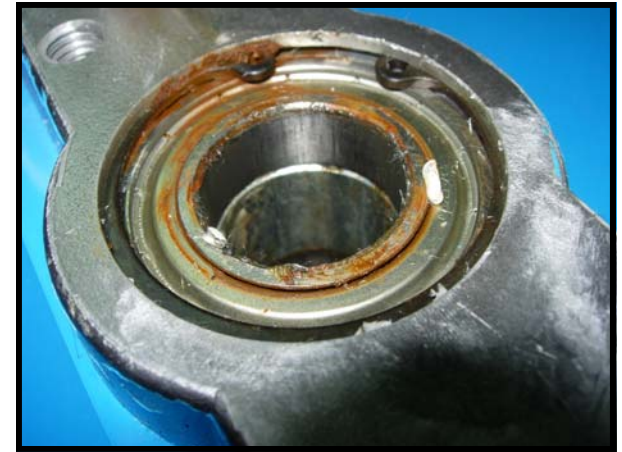
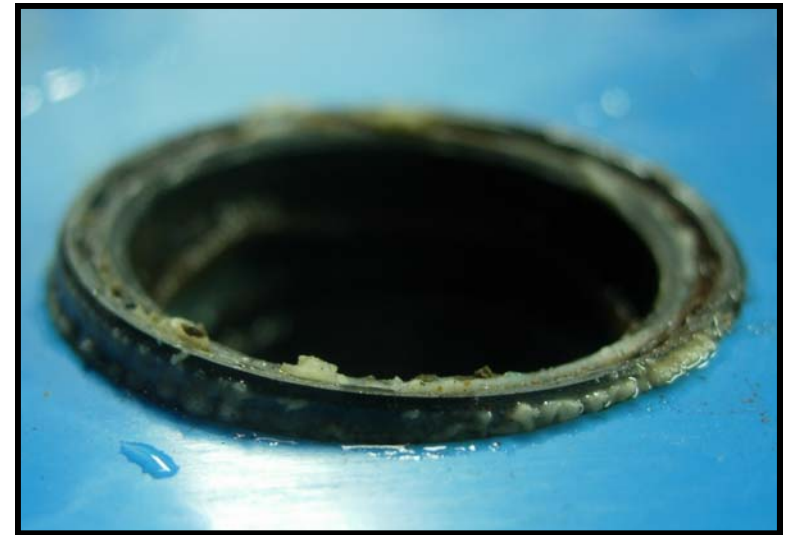
Tank shaft seal Inspection:



On the left is a healthy tank shaft seal, the silicone glue and packing grease maintain their original color. The integrity of this tank shaft seal has not been compromised. The bearings will show no sign of water damage and run smoothly. If there are no issues with the tank bearings, the bearings and tank shaft seal can be left in place and the tank re-assembled.



The right seal has been compromised. Telltale signs are the discolored silicone and the propensity for the tank seal to pop out of position when the main-shaft/flywheel assembly is removed. The seal (part number 10025) tank bearings (part number 10012) spacer (part number 10145) and C-clip (part number 10186) will be replaced in the tank shaft seal kit.



Removing the tank bearings and tank



1. Remove C-clip from rear of aluminum housing



2. With small drift and hammer, lightly tap out and remove the rear bearing



3. Remove Rear bearing and spacer

4. Tap out the front bearing and remove



5. Lightly tap out the mainshaft seal and remove



Replacing the tank bearings

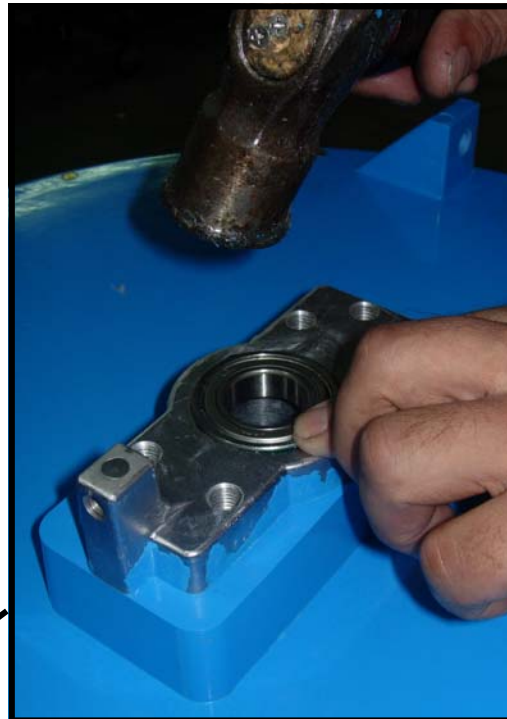


1. Clean inside of aluminum housing. Add thread locker to the outside of the bearing and to the inside of the aluminum housing where the two bearings will be located. Note that the service tech will be required to rig up a tool of some kind to tap the front tank bearing in. An example of the set up we use at the factory is shown below. A simple washer and metal spacer will also work. Check that the bearings are rotating smoothly once seated in the housing.

2. Replace Spacer.



3. Replace rear bearing

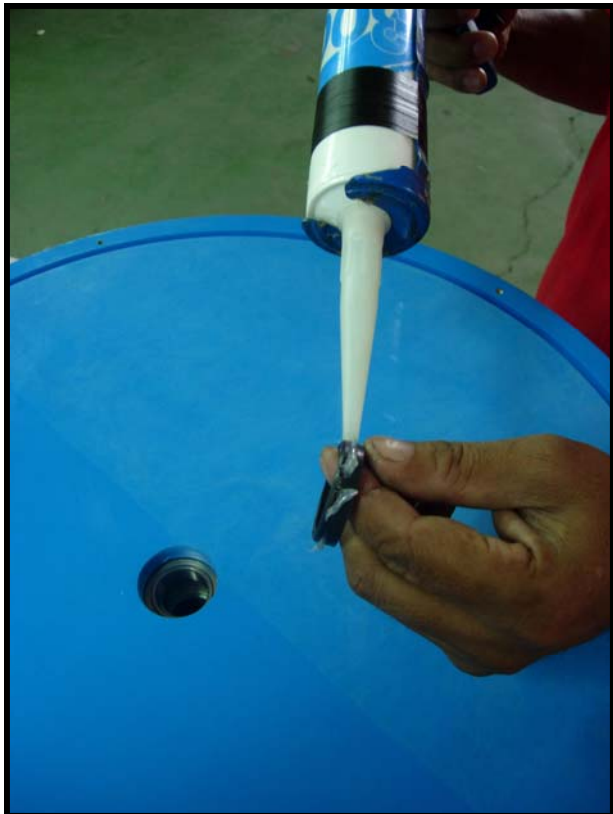


4. Replace C-clip

Replacing the tank shaft seal:



1. Carefully remove any residual matter (silicone glue or grease) from the SMC seal housing walls before pressing in the new seal housing.



2. Apply silicone glue to the outside of the NBR tank seal prior to pressing the seal into the SMC tank back. Standard fish tank grade Silicone is required.

3. Tap the seal into place lightly with a rubber mallet until flush with SMC. The excess silicone glue will be pushed upward from the sidewall between the seal and SMC seal housing. With your finger, use this excess silicone to create an extra barrier by covering the an area extending approx 2cm from the outer SMC wall with the excess silicone, paying special attention to the "lip" area of the housing. Then clean out any remaining silicone located between the "lips" of the seal before proceeding. Allow a few minutes for the initial setup of the silicone glue before moving on to the silicone packing grease.

Silicone Grease Packing:

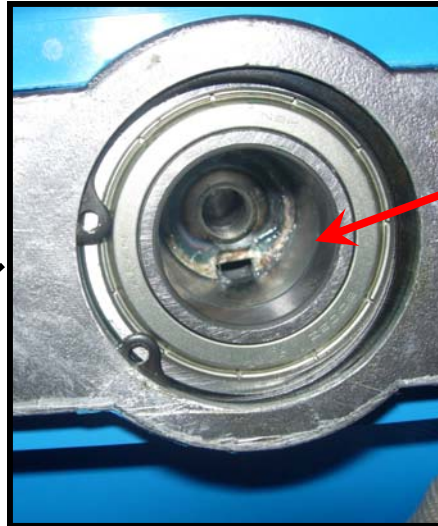


Apply a generous amount of Silicone grease (standard O-ring grease) to the inside of the seal and pack the area between the rear of the seal and the front bearing with a liberal amount of O-ring grease. Above right is an example of a properly prepared tank shaft seal .

Reinstalling the flywheel/main shaft

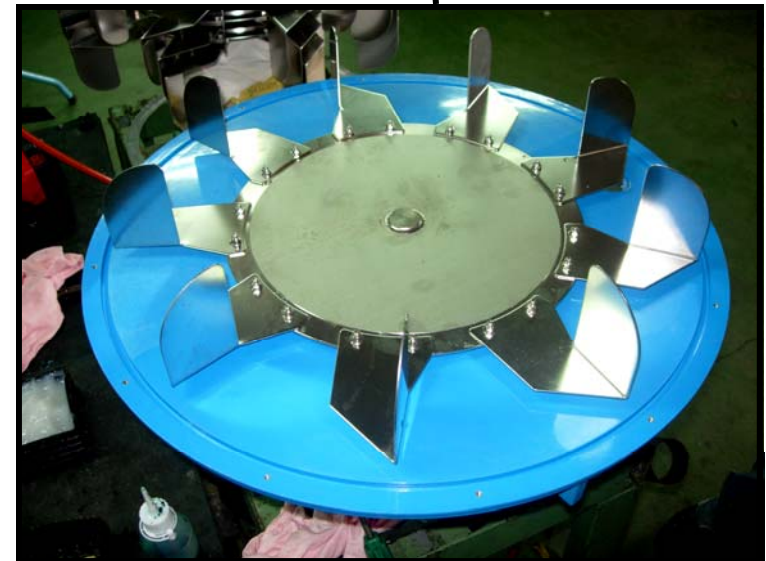


1. Apply axle grease to main shaft before installation.



Note: When pressing the main shaft into the SMC tank back, make sure the bearing spacer is aligned.

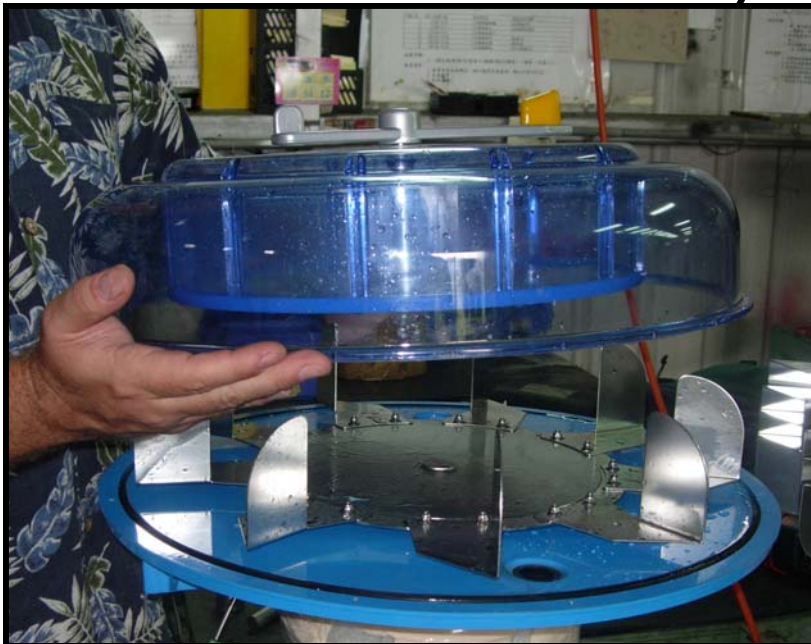
2. Once the Flywheel/ Main shaft assembly has been completed, you may proceed with reinstalling the tank cover O-ring, PC cover and finally whichever drive system is applicable for the tank in question.



Reinstalling the Tank O-ring and Polycarbonate cover



1. Lay the O-ring into the SMC O-ring groove, making sure it is flat and flush before securing the PC cover. An improperly laid and prepared O-ring will seep water over time. If the seal is excessively dry, then add a light coat of silicone grease.



2. When attaching the PC cover, use a cross pattern with the screws. If a power tool is used, the lightest setting is more than enough to establish a seal. **Note over tightening the tank screws will readily crack the PC cover!**

Reinstalling the small belt pulley, keyway and bolt



1. Reinstall the Small belt pulley onto the main-shaft. Remember to keep the keyway positions on the shaft and pulley lined up as you go.



2. Apply thread locker to the keyway before knocking into place. Use a drift or heavy bladed screwdriver to drive the keyway into place as shown upper right.



3. The Keyway, small pulley and main-shaft assembly. To finish, reinstall the washer, spring washer and tank shaft bolt

