

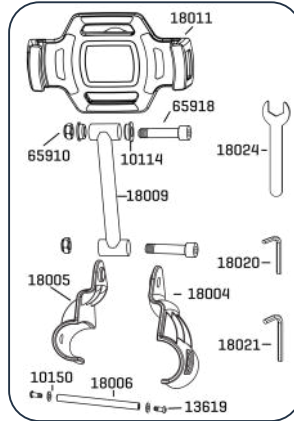
## TBH-P PROFILE FRAME BRACKET

Fits models with profile steel frames

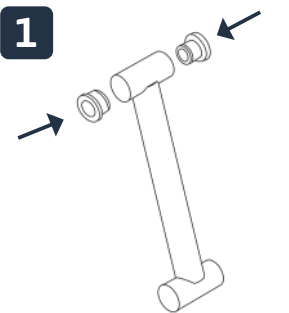
# ASSEMBLY INSTRUCTIONS

The FDF FluidRower Tablet Holder is fully adjustable to suit smart phones and tablets. Ranging in size from 15.2 to 33cm / 6" to 13".

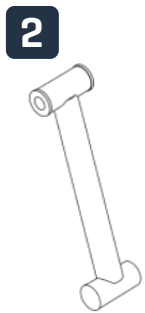
The 360 Degree Tablet Holder rotation can accommodate Landscape and Portrait layouts and the fully adjustable tilt on two planes ensures the perfect viewing angle.



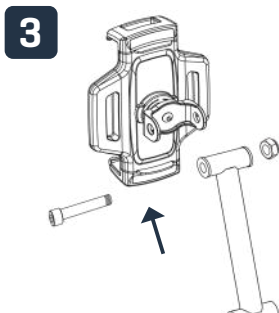
Code	Qty	TBH-P - Parts Description
10114	2	Plastic Bushing 20x16x13x10
10150	2	Washer M6x13x1T - B
13619	2	Dome Head Bolt M6x15 - B
18004	1	Plastic Base - L / APPV
18005	1	Plastic Base - R / APPV
18006	1	Monitor Shaft
18009	1	Tablet Holder Support Bracket
18011	1	Tablet Holder
65910	2	Nyloc Nut M10 - B
65918	2	M10*60 Bolt
18020	2	4mm Allen Key
18021	1	6mm Allen Key
18024	1	17mm Wrench



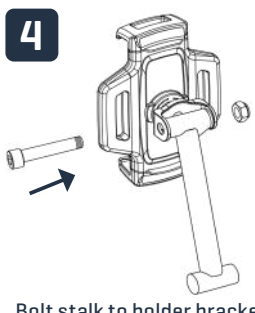
Insert sleeves into the one end of the holder stalk



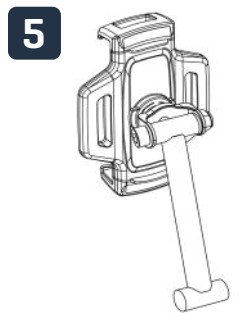
**STALK COMPLETE**



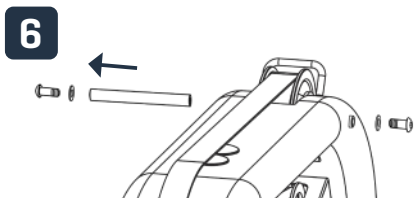
Insert stalk end with sleeves into holder bracket



Bolt stalk to holder bracket  
**TOOLS** 17mm Spanner  
6mm Allen Key

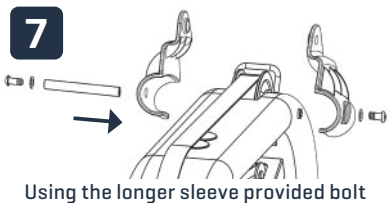


**HOLDER COMPLETE**



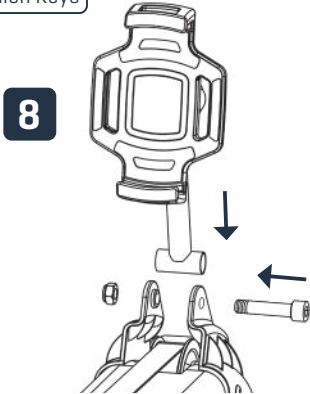
Remove sleeve from top pulley

**TOOLS** 2 X 4mm Allen Keys



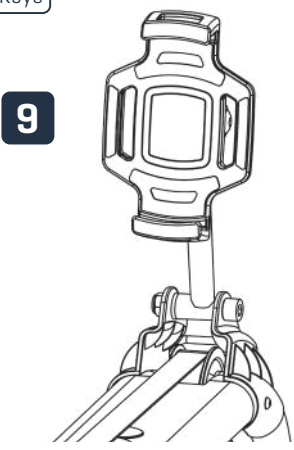
Using the longer sleeve provided bolt the profile brackets to the frame, finger tighten.

**TOOLS** 2 X 4mm Allen Keys



Add stalk with device holder attached to Bracket. **Fully tighten all bolts.**

**TOOLS** 17mm Spanner  
8mm Allen Key



**FULLY ASSEMBLED HOLDER AND STALK**

Your Tablet Holder is now ready to test with your device at the desired viewing position. Test your device is held firmly in place now, and before any exercise session. If your device is being left in place between exercise sessions it is recommended that the device is lowered to rest on the frame of the rower until you reposition and test before your next session.

UPDATED 16 MAY 22